

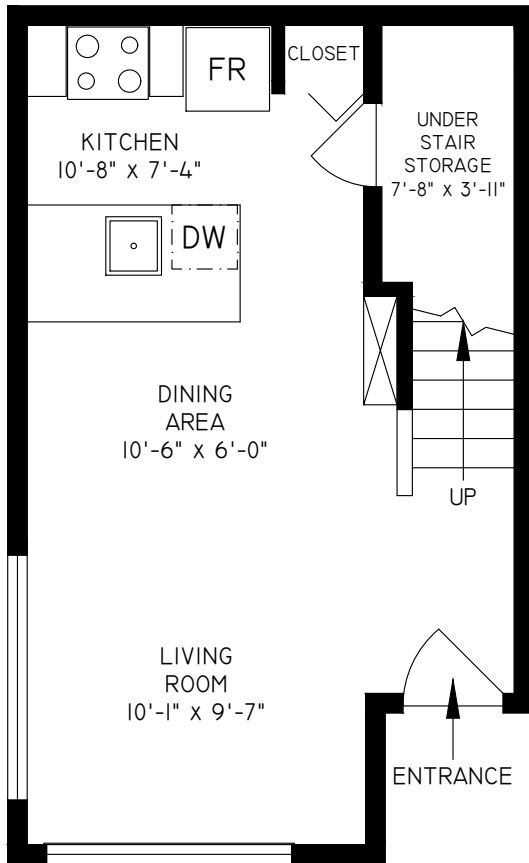


FRASERVIEW CO-OPERATIVE
TH#11 - 2910 EAST KENT AVENUE
VANCOUVER
PLAN - TC (860 SQ. FT.)

FIRST FLOOR

385 SQ. FT.

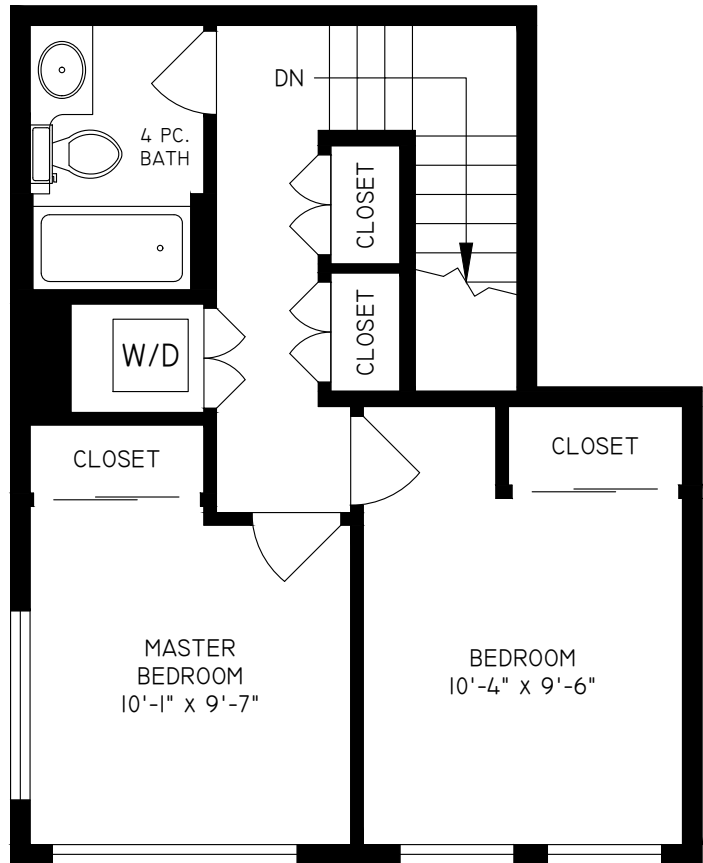
8'-0" - 9'-0" CEILING HEIGHTS



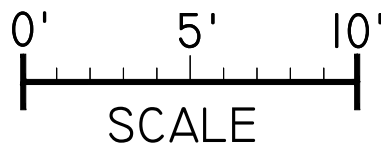
SECOND FLOOR

475 SQ. FT.

8'-0" CEILING HEIGHT



TH#11 - 2910 EAST KENT AVENUE, VANCOUVER



FLOOR	AREA (SQ. FT.)
	FINISHED
FIRST	385
SECOND	475
TOTAL	860



THE REPRESENTED FLOOR PLANS ARE NOT SUITABLE FOR CONSTRUCTION/ARCHITECTURAL PURPOSES. EVERY EFFORT HAS BEEN MADE TO REPRESENT ALL DIMENSION ACCURATELY, & INSURED.