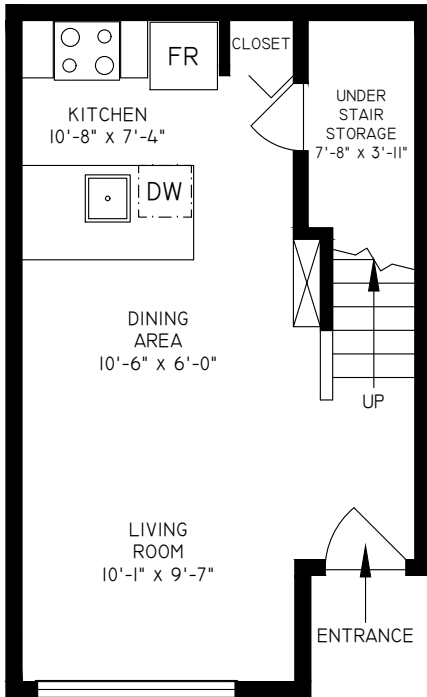


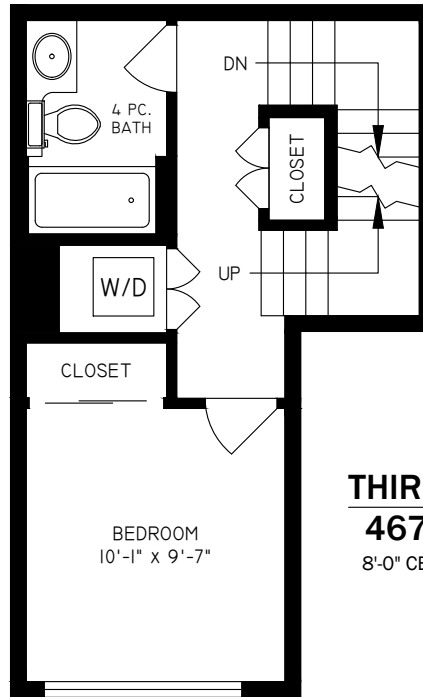


FRASERVIEW CO-OPERATIVE
TH#2 - 2910 EAST KENT AVENUE
VANCOUVER
PLAN - TA (1189 SQ. FT.)



FIRST FLOOR
385 SQ. FT.

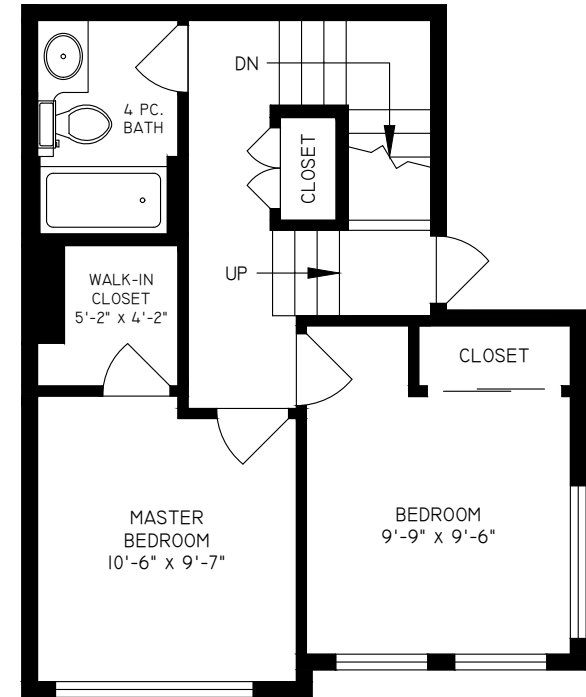
8'-0" - 9'-0" CEILING HEIGHTS



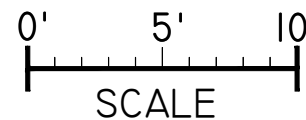
SECOND FLOOR
337 SQ. FT.

8'-0" CEILING HEIGHT

THIRD FLOOR
467 SQ. FT.
 8'-0" CEILING HEIGHT



TH#2 - 2910 EAST KENT AVENUE, VANCOUVER	
FLOOR	AREA (SQ. FT.)
FINISHED	
FIRST	385
SECOND	337
THIRD	467
TOTAL	1189



THE REPRESENTED FLOOR PLANS ARE NOT SUITABLE FOR CONSTRUCTION/ARCHITECTURAL PURPOSES. EVERY EFFORT HAS BEEN MADE TO REPRESENT ALL DIMENSION ACCURATELY. E&O INSURED.