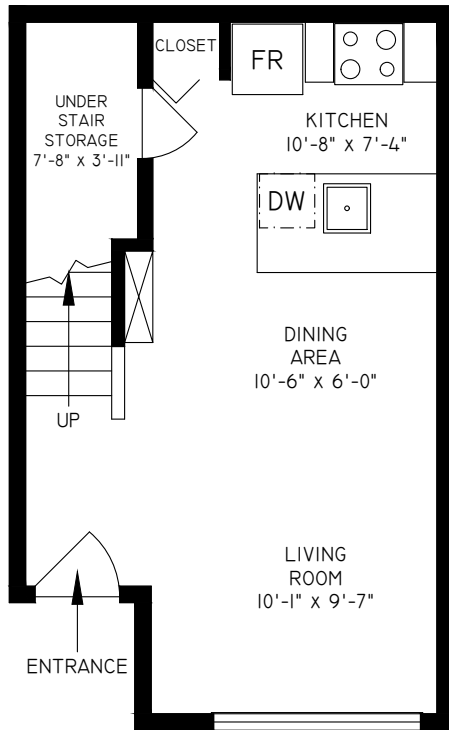
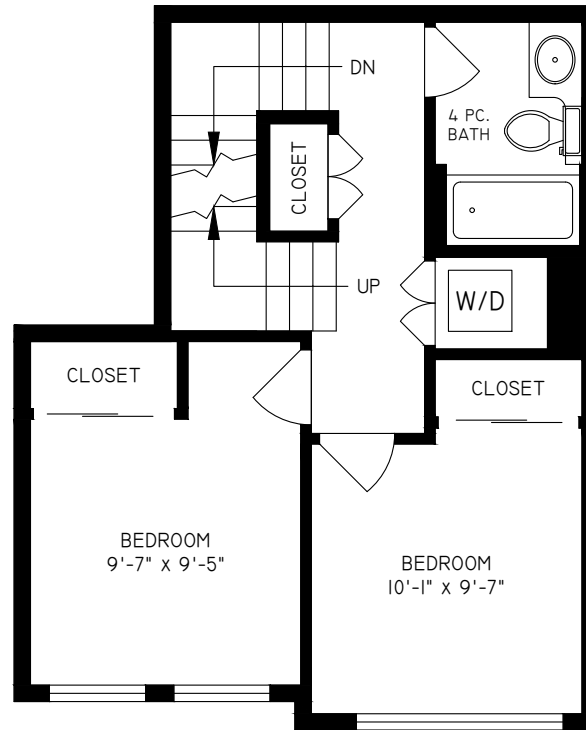




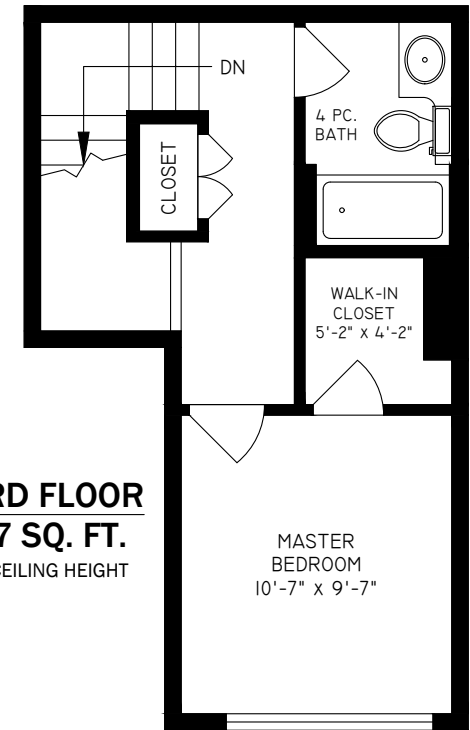
FRASERVIEV CO-OPERATIVE
TH#5 - 2910 EAST KENT AVENUE
VANCOUVER
PLAN - TB (1189 SQ. FT.)



FIRST FLOOR
385 SQ. FT.
 8'-0" - 9'-0" CEILING HEIGHTS

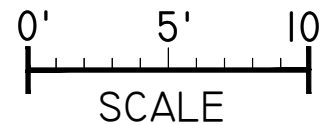


SECOND FLOOR
467 SQ. FT.
 8'-0" CEILING HEIGHT



THIRD FLOOR
337 SQ. FT.
 8'-0" CEILING HEIGHT

TH#5 - 2910 EAST KENT AVENUE, VANCOUVER	
FLOOR	AREA (SQ. FT.)
	FINISHED
FIRST	385
SECOND	467
THIRD	337
TOTAL	1189



THE REPRESENTED FLOOR PLANS ARE NOT SUITABLE FOR CONSTRUCTION/ARCHITECTURAL PURPOSES. EVERY EFFORT HAS BEEN MADE TO REPRESENT ALL DIMENSION ACCURATELY. E&O INSURED.